

A FirstEigen White Paper



Enterprise Data Quality Platform at Scale

 Key Checklist

Gartner
Cool
Vendor

IDC  Innovator

contact@firsteigen.com  FirstEigen™

Overview

A Strategic Framework for Heads of Data, CDOs, and Data Platform Leaders

As a Head of Data, CDO, or Data Platform Leader, your mandate extends beyond simply delivering data – you must deliver **trusted, reliable, business-ready data at scale**. The success of analytics initiatives, AI programs, regulatory compliance, self-service data strategies, and cloud modernization all depend on enterprise-wide confidence in data quality.

Traditional rule-only or observability-only approaches are no longer sufficient. They create operational drag, require substantial engineering investment, generate false alerts, and fail to guarantee end-to-end integrity. What you need is a [scalable, autonomous enterprise platform](#) that reduces risk, accelerates value, and embeds trust into your data platform architecture – without slowing innovation.

This framework outlines a prescriptive approach for leaders responsible for enterprise data trust to reduce operational overhead, ensure governance assurance, support AI readiness, and enable faster, safer business decision-making across your organization.



The Enterprise Data Trust Crisis

Organizations are investing significantly in modern data platforms such as Snowflake, Databricks, BigQuery, Azure Fabric, cloud data lakes, and on-premises transactional warehouses. Yet one persistent problem remains: **Business stakeholders still struggle to trust their data.**

Even with robust pipelines and sophisticated architectures, data errors continue to propagate downstream, corrupting analytics, degrading AI accuracy, eroding confidence, delaying initiatives, and impacting revenue, risk, compliance, and decision quality. Gartner estimates organizations lose on average **\$14 million per year** due to poor data quality. IDC identifies lack of trusted data as a primary barrier preventing AI adoption success.

Traditional data quality systems fail because they depend on manual rule authoring or basic statistical monitoring that lacks context awareness. Meanwhile, new data observability platforms often drown teams in noise, irrelevant alerts, and inflated compute costs – without solving data integrity or business truth validation.



The Bottom Line

Enterprises now require a new class of platform: a **context-aware, autonomous, scalable, and in-situ data quality solution** that works across data lakes, cloud platforms, on-premises systems, and AI pipelines.

\$14M

Annual Loss

Average yearly cost of poor data quality per organization

900+

Rules Generated

Typical rule explosion per dataset with statistical-only platforms

70%

Alert Noise

Percentage of alerts that prove to be false positives or irrelevant

Why Current Approaches Fall Short

The enterprise data quality landscape is littered with solutions that promise comprehensive coverage but deliver incomplete protection. Understanding where traditional and modern approaches fail is essential for making informed platform decisions.

1

Manual Rules Writing Platforms

Legacy data quality solutions such as Informatica, Precisely, and Ataccama are powerful but rely heavily on manually authored rules. At enterprise scale, this approach breaks down because writing rules requires expensive SMEs, architects, and engineers to maintain. Hundreds to thousands of datasets make rule authoring unsustainable, and many critical rules are missed due to prioritization constraints. Rules quickly become outdated as business logic evolves.

The result: Serious coverage gaps where business discovers errors only when they surface in dashboards, compliance submissions, analytics outputs, or AI behavior – by which time the damage is already done.

2

Statistical-Only Data Observability Platforms

Modern observability platforms such as Monte Carlo, BigEye, and similar alternatives attempted to solve the scaling problem using automated statistical monitoring. While effective initially for metadata-level monitoring, enterprises experience massive rule and metric explosion – a single dataset may generate 900-1200 rules. Alert noise overwhelms teams, causing alert fatigue and high compute costs due to constant metric computation.

Critical limitation: These tools rarely validate business truth or integrity across transformation layers. *Observability ≠ Data Trust.*

"Most platforms apply generic checks and hope some are relevant. What enterprises need is intelligence that understands what your data means, why it exists, how it is used, and what governs its quality."

The Context-Aware Solution: Core Functional Pillars

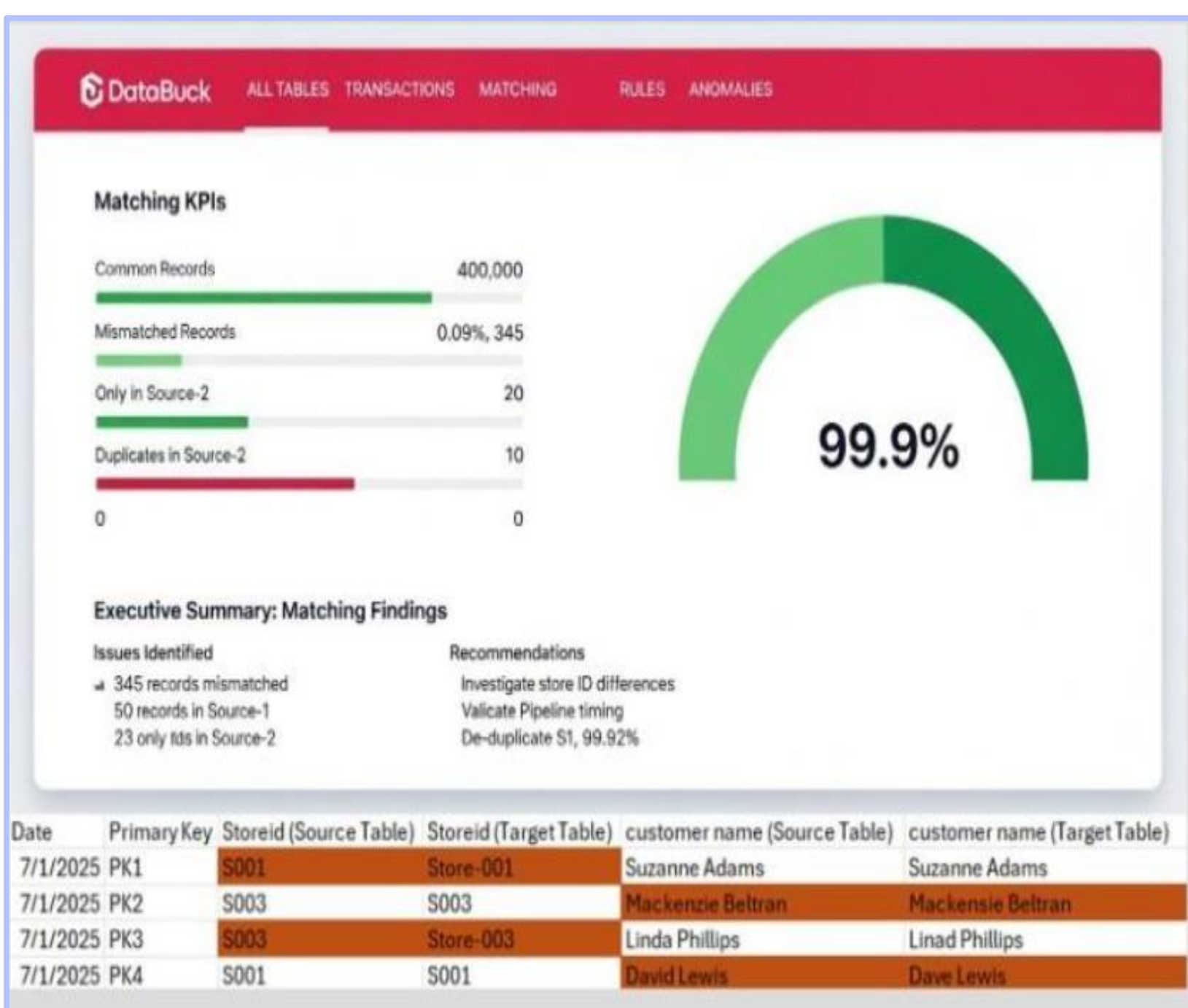
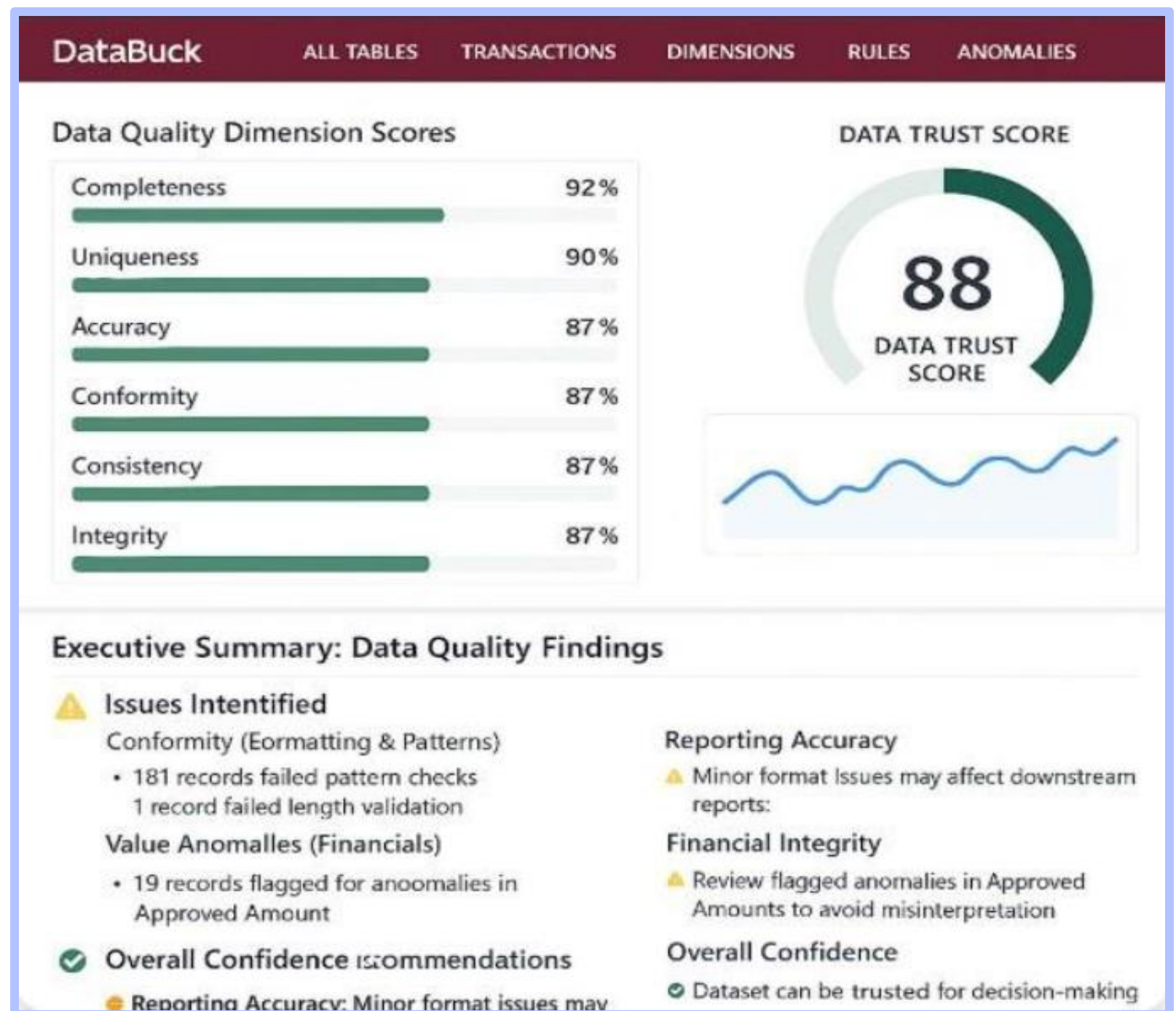
Effective enterprise data quality requires three interconnected capabilities that work together to establish and maintain trust throughout the data lifecycle. Each pillar addresses a critical gap in traditional approaches while enabling autonomous, scalable operations.



Data Quality Monitoring & Detection

Continuous, proactive monitoring – not periodic auditing. Autonomously monitors freshness and timeliness, completeness and missing data, schema validity and stability, uniqueness and duplication, statistical anomalies and pattern deviation, and drift across time.

Uses contextual ML to reduce noise and elevate issues that truly matter, ensuring operational stability, trusted analytics, and reliable AI outputs.



Data Reconciliation

Trust must be preserved across the entire data journey from source to staging to warehouse to consumption. Delivers scalable reconciliation using schema and structure comparison, fingerprint-based fast dataset identity checks, immutable key validation, cell-to-cell integrity matching, and aggregate reconciliation for transformation pipelines.

Ensures last-mile truth and prevents ETL logic flaws, aggregation errors, data corruption, and silent data loss issues.



The Context-Aware Solution: Core Functional Pillars

Effective enterprise data quality requires three interconnected capabilities that work together to establish and maintain trust throughout the data lifecycle. Each pillar addresses a critical gap in traditional approaches while enabling autonomous, scalable operations.



Data Remediation

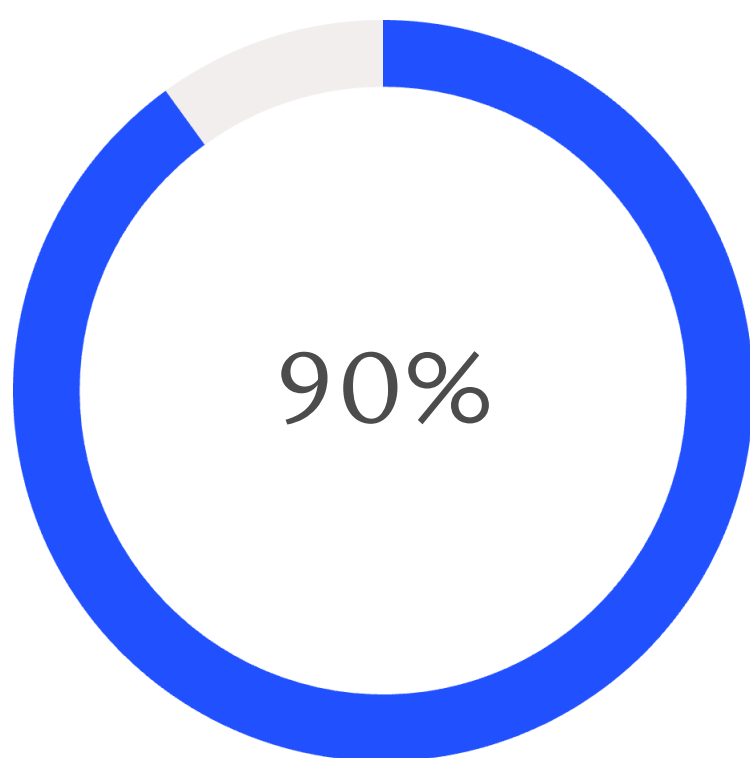
Detection without resolution remains operationally burdensome. Provides remediation intelligence through automated remediation workflows, guided resolution with business context, business stakeholder approvals, integration with workflow and ticketing systems, and full audit logging and compliance traceability.

Eliminates firefighting cycles and establishes a sustainable quality governance model.

Alert Log ID %s	Execution Date %s	Run	Alert Message	Ticket ID	Priority %s	Status %s	Remediation Recommendation	Actions
12229	2025-10-03	1	Hi Admin User, Database Name: Fin...	00-2047	High	Open	Review and update null handling logic in Parts_Return_Data table. Implement NO...	
12233	2025-10-03	1	Hi Admin User, Database Name: fe...	00-2048	Medium	Open	Verify data ingestion process for Product table. Check source system data quality...	
11151	2025-10-01	1	Hi Admin User, Database Name: fes...	00-2021	High	Closed	Update validation rules for Loan_data table. Implement data masking for...	
18956	2025-10-01	1	Hi Admin User, Database Name: fes...	00-2015	Low	Open	Schedule data reconciliation job for sales tables. Validate against source system...	
18968	2025-10-01	1	Hi Admin User, Database Name: fes...	00-2016	Medium	Closed	Apply data standardization rules. Implement lookup tables for categorical...	

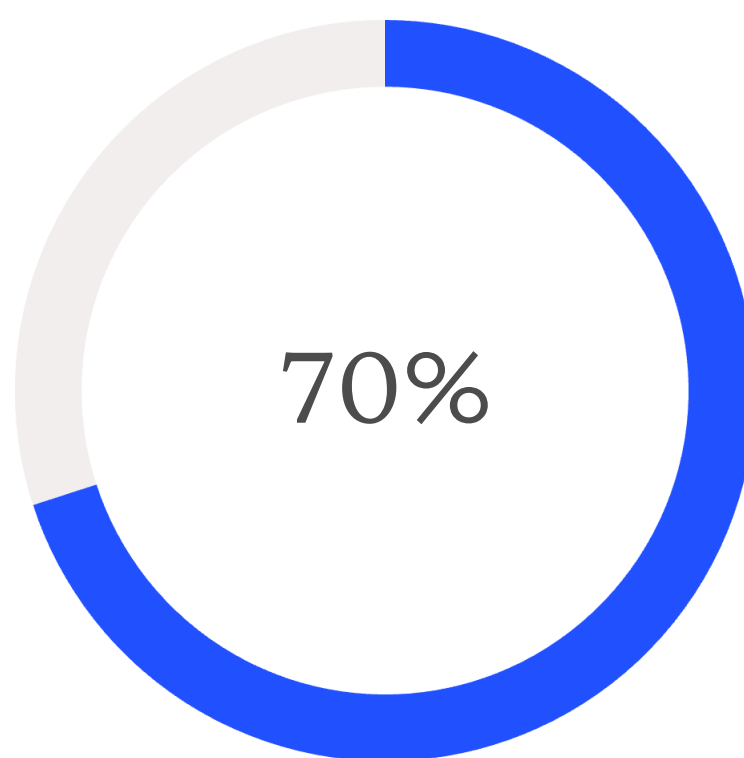
The Context-Aware Advantage of DataBuck

Context-aware platforms like DataBuck apply intelligence by understanding industry regulations (banking, financial compliance, telecom standards), domain best practices (proven validation patterns for finance, telecom, retail, insurance, and supply chain), use case intelligence (workloads such as AML, churn analytics, risk scoring), and enterprise policies (learning each organization's internal governance requirements dynamically).



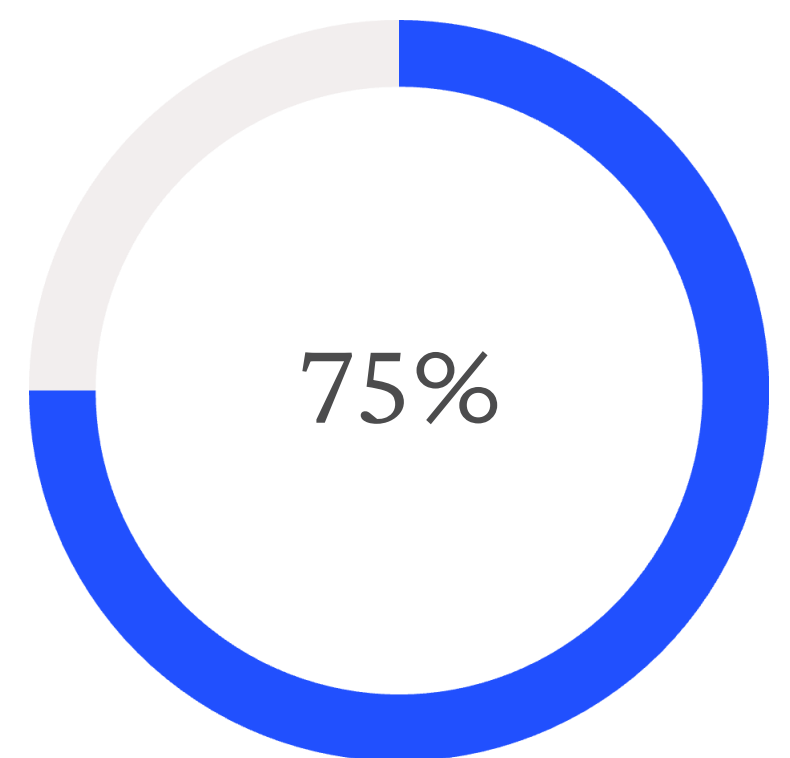
Effort Reduction

Decrease in manual rule writing effort



Trust Accuracy

Improvement in accuracy of trust signals



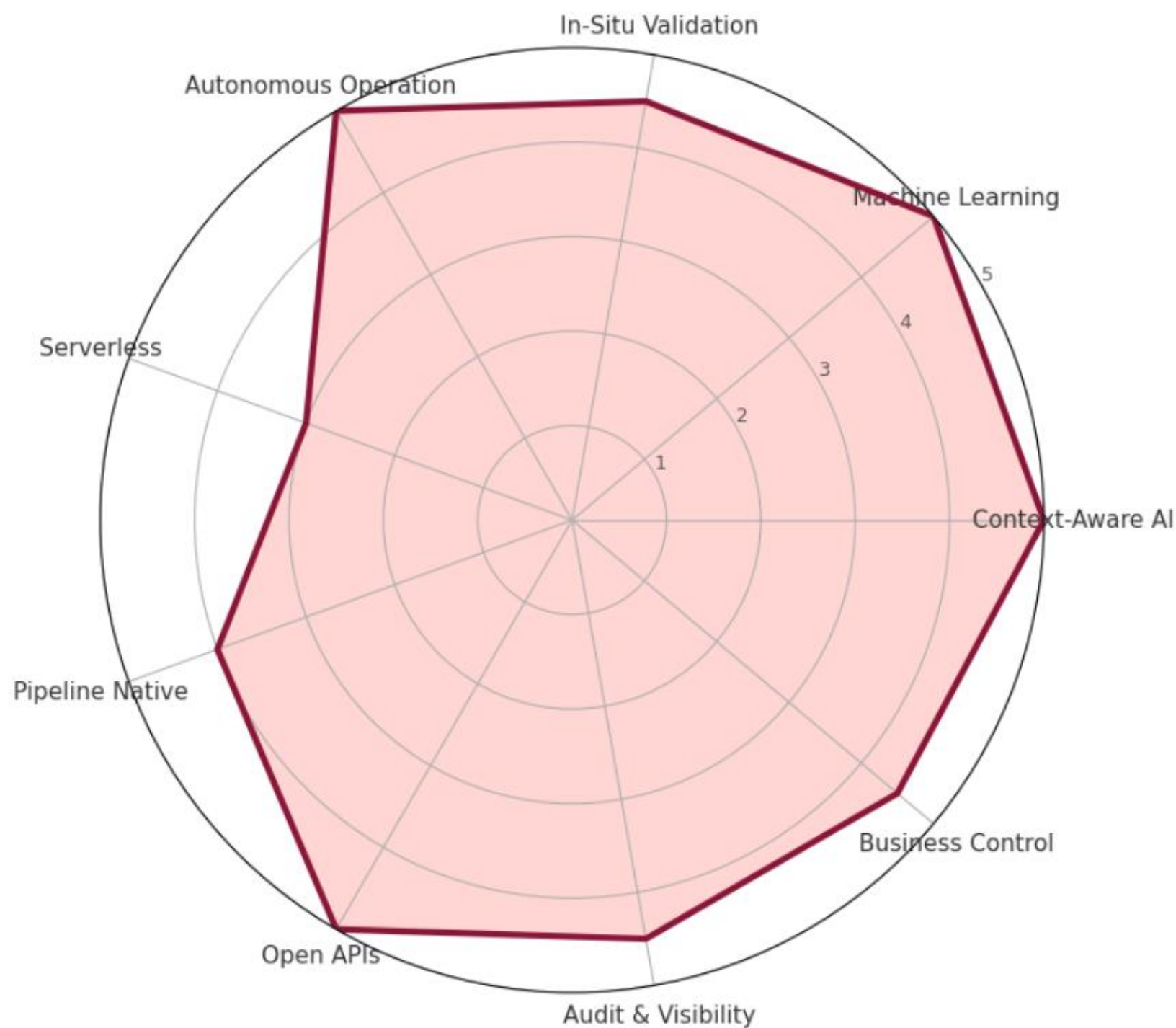
Faster Deployment

Reduction in time-to-trust for new data assets



Enterprise Architecture Requirements: Your Platform Checklist

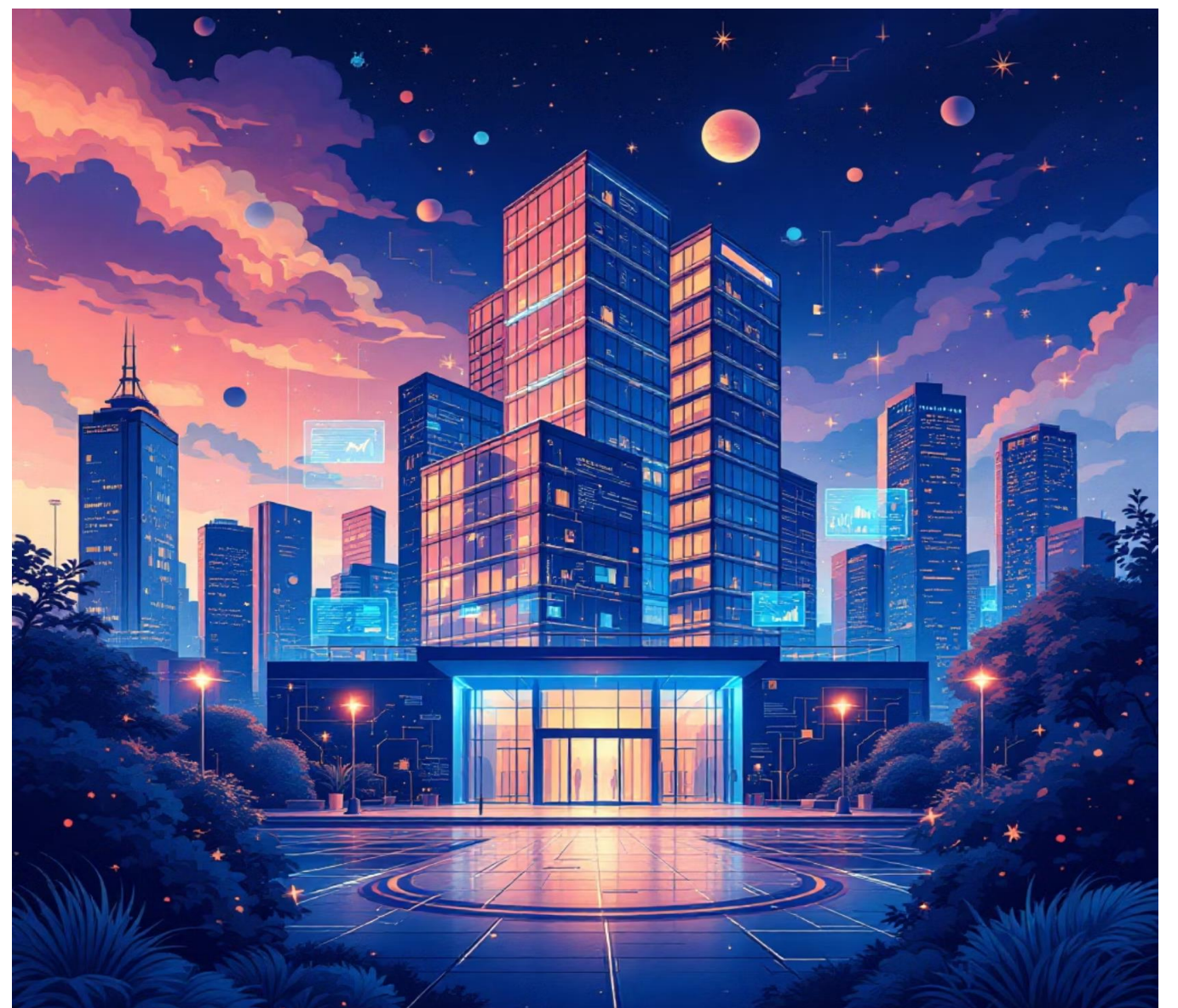
Selecting an enterprise data quality platform requires evaluating capabilities across architecture, integration, scalability, intelligence, and governance dimensions. This comprehensive checklist ensures your platform choice delivers sustainable, long-term value while supporting current and future data initiatives.



Proven Enterprise Results

Leading global enterprises including Toyota, Verizon, Johnson Controls, Cisco, Absa Bank, and Frontier Communications have deployed context-aware data quality platforms to achieve transformational outcomes. These organizations have eliminated manual operational overhead, accelerated time-to-market for analytics and AI initiatives, reduced false alert noise by over 80%, and established automated remediation for high volumes of Level-1 data issues.

The bottom line: Modern enterprises cannot scale trust using manually authored rules or shallow statistical monitoring. Achieving sustainable, enterprise-wide confidence in data requires an autonomous, context-aware, AI-enabled data quality platform that embeds trust directly into your data platform architecture without slowing innovation.



Next Steps for Data Leaders

Evaluate your current data quality maturity against this enterprise checklist. Identify gaps in context awareness, automation, and scalability. Engage platform vendors recognized by Gartner and IDC to understand how modern solutions deliver rapid time-to-trust, early anomaly detection, and sustainable governance at enterprise scale.

